

QUOTATION



5 ton Flat tow truck body

Specification:

Upper-Body Specification

Dims of flatbed (mm)	5200 (17feet) *2300
Max Lifting weight(kg)	5000

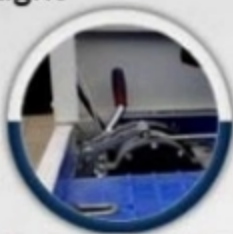
Max. Loading of platform(kgs)	5000
Rear Boom towing weight (kg)	5000
Material platform	Q235 Carbon steel
Winch function	
Quantity (set)	2
Max. Pulling power of winch(kgs)	5000
Length of steel cable(m)	25
Speed of winch (m/min)	8

Detailed Images

Optional Warning Light



Auxiliary Trolley



Rear Tow Structure



Hydraulic Winch/25m Wire Rope

Operating Valve



Non-slip plate

Half Landed Type



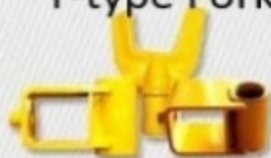
Full Landed Type



L-type Fork



Y-type Fork



Bandage



Steel Hook



Parts Photos:

Warning Lamp



Auxiliary Wheels



Hook



Wheel Lift



Hydraulic Operation Handle



Winch



Bandages



PRODUCT DETAILS



A pair of training wheels makes towing working easily when wheels are damaged

01

Extra Strength Winch with 21meters steel cable

02



Manual joystick with instructions on side body of the truck makes control work easily

03

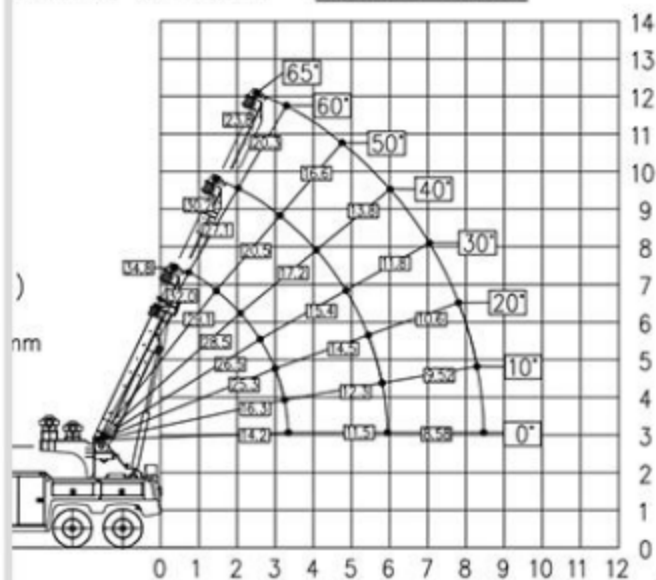
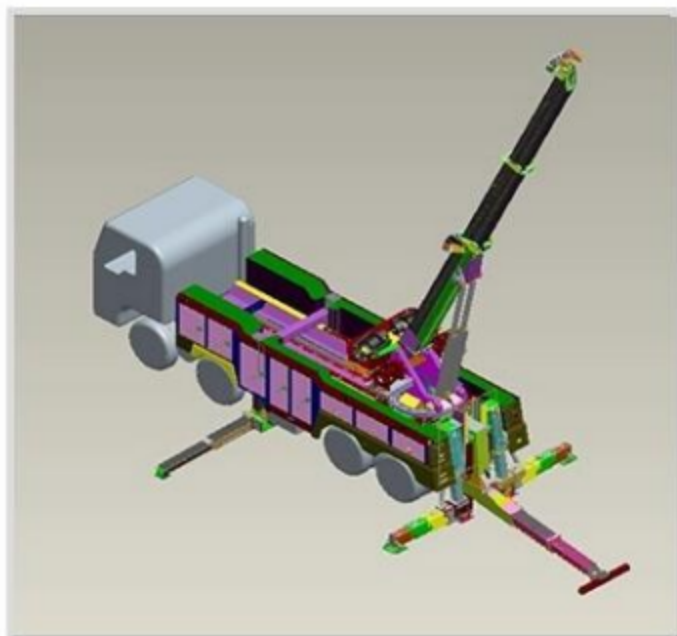


The tire belt keep car stability on wrecker truck

04



standard configuration



APPLICATION SCENARIOS



OTHER TYPE EXHIBITION



◀ Flatbed type wrecker

- >Capacity 5-2-ton
- >Rescue two or three cars at the same time
- >Manual or wireless control

Wrecker with crane ▶

- > Fitted with a strong wheel lift
- > Multipurpose on towing and lifting
- > Easily respond to various situations





◀ Integrated line wrecker

- >Z-shape boom allows to transfer load to front axle
- >Two rear anchor legs hold truck safely
- >Large storage boxes for all your tools

Rotators type wrecker ▶



- >Continuous 360 motion from side to side
- >Standard H-shap outriggers supporting
- >Work with a load at a safe distance



Should you not find a truck you need, please contact us and we will make customization for you!